

FOR SALE  MULTI-TENANT INVESTMENT

3101, 3106, & 3110 N. Canterbury Ct.

Bloomington, IN



TUCKER COMMERCIAL
BLOOMINGTON



Property Highlights

- Westbury Park for sale \$3,600,000
- Features 3 separate business buildings fitted for retail, office, & restaurant space
- Buildings currently leased
- Individual building pricing available:
 - ◆ 3101: \$688,800
 - ◆ 3106: \$1,320,000
 - ◆ 3110: \$890,400

Chris Cockerham, CPM, GRI
Commercial Manager/Broker
F.C. Tucker/Bloomington, REALTORS®
487 S. Clarizz Blvd.
Bloomington, IN, 47401
Direct: 812-330-7568
Fax: 812-333-7740
Email: chris@cockerham.us
www.cockerhamcommercial.com

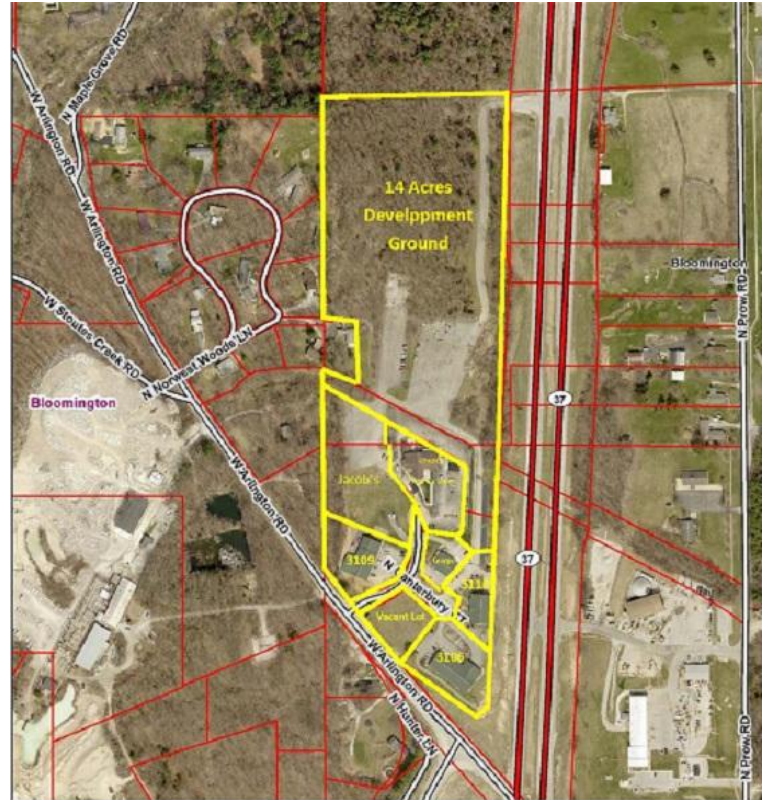
3101, 3106, & 3110 N. Canterbury Ct. (Westbury Village)



Bloomington, IN

Location Highlights

- Neighbor to major area high school
- High visibility in high traffic location w/ easy access to new I-69/HWY-37 corridor
- Potential business signage facing interstate
- Fast & convenient access to restaurants, retail, professional businesses, hospital, & other local amenities



Chris Cockerham, CPM, GRI
Commercial Manager/Broker
F.C. Tucker/Bloomington, REALTORS®
487 S. Clarizz Blvd.
Bloomington, IN. 47401
Direct: 812-330-7568
Fax: 812-333-7740
Email: chris@cockerham.us
www.cockerhamcommercial.com